

fyreSense

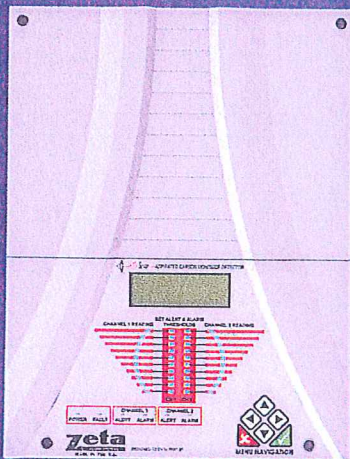
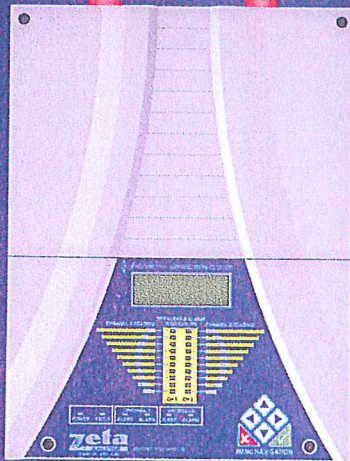
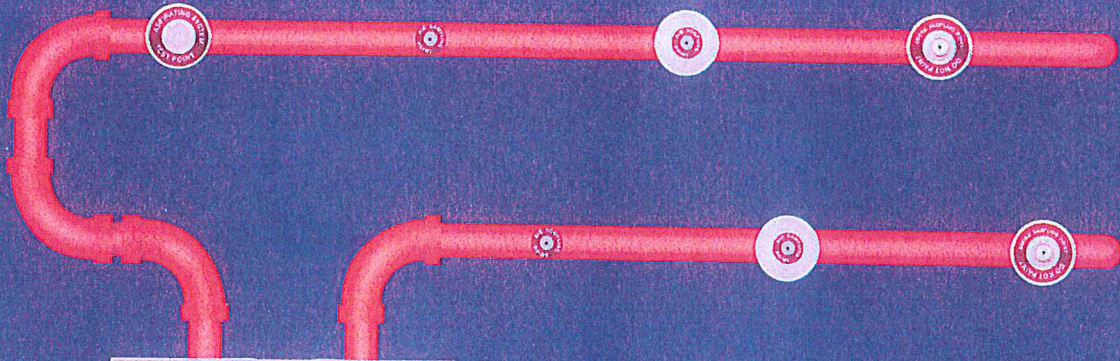
SMOKE DETECTION
ASPIRATING SYSTEM

CO Sense

CARBON MONOXIDE DETECTION
ASPIRATING SYSTEM

zeta

ALARM SYSTEMS



PRODUCT FEATURES

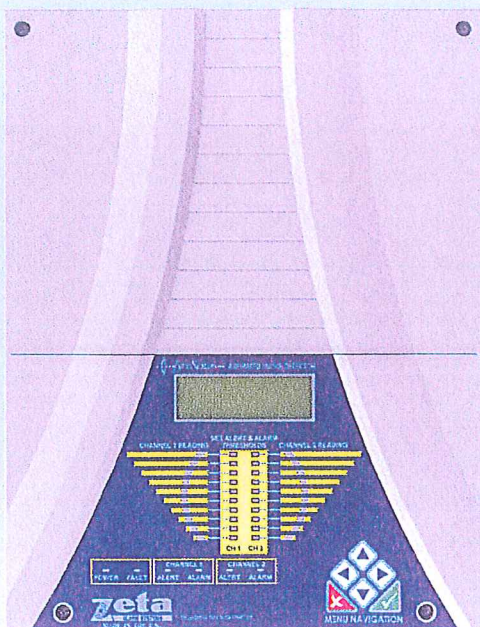
- > 2 detection channels
- > 2 universal pipe inlets per channel
- > Independent alert & alarm for each channel
- > Can use high sensitivity smoke detectors or laser point smoke detectors
- > 4 x 20 LCD display
- > Special version for CO detection
- > Other gasses planned in the near future
- > Can be used for enhanced sensitivity applications, and for remote sensing applications.
- > Relay outputs for universal compatibility.



Assessed to ISO 9001: 2009
Certificate number 330

GLT Exports Ltd

MANUFACTURERS OF FIRE ALARM EQUIPMENT



The FyreSense Aspirating Smoke Detection System uses fans to draw air from the protected area via pipes and sampling holes. The air is then passed through a high sensitivity detector. FyreSense has many advantages over ceiling mounted point detectors, such as:

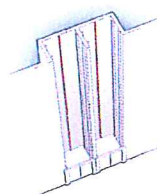
- ✓ Higher sensitivity
- ✓ Lower installation and maintenance costs
- ✓ The detectors can be situated away from harsh environments
- ✓ The air can be filtered or heated before reaching the detectors
- ✓ Easier to maintain in areas such as lift shafts, ceiling voids or under floor boards
- ✓ Ideal for use where aesthetics are important or where the application must be vandal proof
- ✓ Better performance where there are high ceilings, high air speeds or smoke stratification

Model	FS-8	FS-16
Part Number	82-050	82-055
Supply Voltage	21-29V DC (24V Nominal)	21-29V DC (24V Nominal)
Operating Current	140-220mA	240 - 430mA
Pipe Diameter	25mm Ext Diameter	25mm Ext Diameter
Pipe Length	100m Max	200m Max
Max Sampling points	8	16
Sensitivity	1.65 to 0.3%/m (10 levels)	1.65 to 0.3%/m (10 levels)
LCD	4 x 20 Character	4 x 20 Character
LED	26 LEDs	46 LED
Alarm Output relay	1	2
Alert Output relay	1	2
Fault relay	1	1
Sounder Outputs	2 x 50mA	2 x 50mA
Inputs	1 x configurable input	1 x configurable input
Operating Temperature	-20° to +60° C	-20° to +60° C
Operating Humidity	0-96% NC	0-96% NC
IP rating	IP 30	IP 30
Dimensions	340H x 265W x 130D (mm)	340H x 265W x 130D (mm)
Weight	3.5 kg	3.6 kg

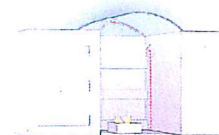
Features

- ✓ 2 detection channels
- ✓ 2 universal pipe inlets per channel
- ✓ Independent alert and alarm outputs for each channel
- ✓ Latching / Non-latching alarm / fault options
- ✓ Airflow Control / Fault Monitoring
- ✓ Uses high sensitivity smoke detectors
- ✓ 4 x 20 LCD display & up to 46 LEDs
- ✓ Can be used for enhanced sensitivity applications, and for remote sensing applications

Applications



Elevator Shaft



Atrium

DISTRIBUTION – INSTALLATION – ASSISTANCE

DETECTION INCENDIE – DETECTION GAZ – EVACUATION - EXTINCTION
 AIRTERM SPRL : Zoning Industriel de Strépy – Route du Grand Peuplier, 23 – 7110 Strépy-Braquénies
 Tél : 064/77.28.74 Fax : 064/26.33.04 GSM : 0494/11.63.99 – 0495/24.49.69
www.airterm.be firesysteme@gmail.com